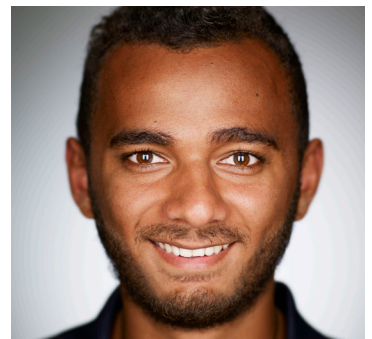


International
Student Guide
New Zealand



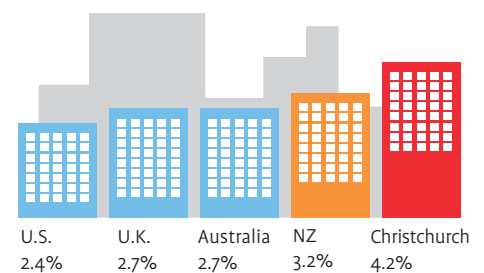
Why New Zealand?

New Zealand is like no other place on earth, with its friendly, welcoming culture, stunning natural environment and some of the best learning opportunities in the world. Students experience a safe, relaxed lifestyle, travelling easily between cosmopolitan cities and the breath taking outdoors for which New Zealand is famous.



Why Christchurch?

Christchurch is New Zealand's second largest city and the economic centre of the South Island. With the lowest unemployment rate in Australasia*, unprecedented growth and employment opportunities, the Christchurch economy is booming. International graduates often take the opportunity to stay on after study and launch their careers locally; adding to the vitality and entrepreneurship of one of the world's most rapidly evolving cities.



Economic growth*

* Figures are current as at March 2015.
For up-to-date information visit www.cdc.org.nz

Why the University of Canterbury?

A world-class education

Founded in 1873 by scholars from Oxford and Cambridge universities, the University of Canterbury (UC) is ranked in the world's top 3% of universities. With a strong international reputation for high-quality degrees, research-active teaching staff and world-class facilities, UC alumni are sought-after both within New Zealand and abroad.



Internationally ranked

UC is placed among the top universities in New Zealand and is in the top 1% in the world for Civil and Structural Engineering. In addition, it has 21 subjects that are ranked in the world's 200.†

† Correct at time of printing – 17 July 2015.
QS World University Rankings by subject 2015.



Innovative programmes

UC offers over 100 programmes, from foundation studies to doctoral studies, in over 150 disciplines, from Accounting to Zoology. With internships, start up incubator programmes and many more opportunities, there is something for everyone.



Learn from the best

UC has modern teaching and research facilities and has been awarded a 5-Star QS ranking for internationally-renowned research and teaching.

The UC Experience

UC has a vibrant campus environment and a great student lifestyle. The University is like a miniature city designed especially for students, with everything you need all on one site in Christchurch, New Zealand. With fully catered on-campus living located in 87 hectares of park-like surroundings, UC offers students a spacious, relaxed setting within which to work and play.



Vibrant student community

At UC your education doesn't end at the lecture theatre door. Join a community where you can be who you are and do what you love. You will live and learn among inspiring and talented people from a range of backgrounds.

Get outdoors in Canterbury

Canterbury is made for outdoor recreation – bordered by the Pacific Ocean and the Southern Alps, the region is packed with rolling hills, mountains and waterways. There is something for every energy and adrenaline level.

Explore UC's campus

With expansive green spaces and gardens, the University's campus is enhanced by the natural beauty it is located within. The campus is a central hub facilitating transformative learning and student success.

Integrated pathways

The University of Canterbury is New Zealand's most efficient university for integrated pathways. In conjunction with our international partners, we provide a comprehensive offering for international students at all levels of tertiary study.

CCEL College of English

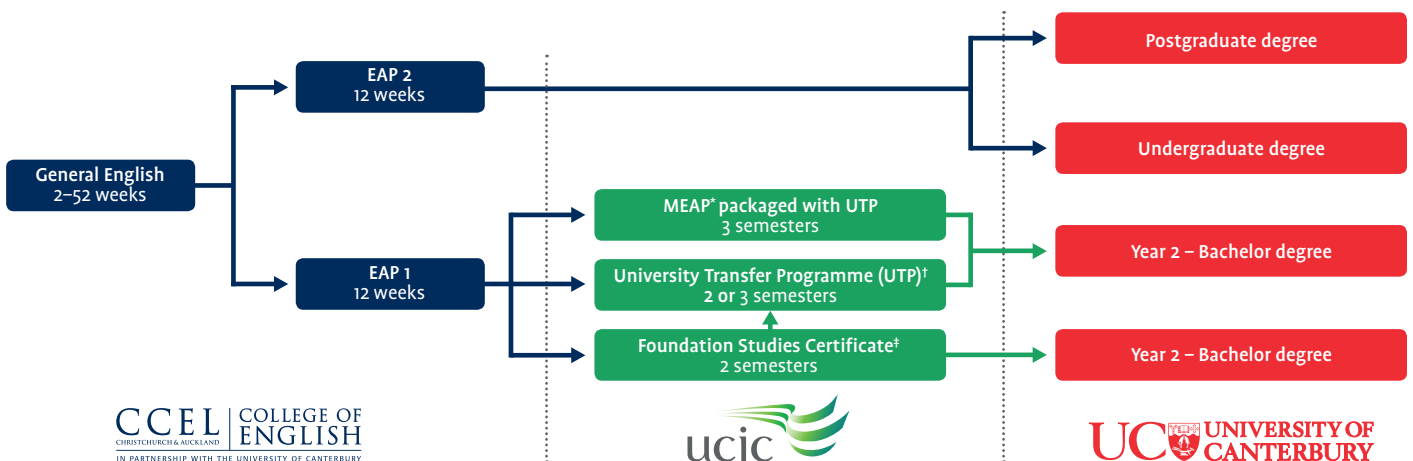
CCEL is one of the leading English language schools in New Zealand and the UC's and UCIC's exclusive English language provider. Located on the UC campus, CCEL provides a range of English programmes including English for Academic Purposes (EAP) courses, which enable students to have direct entry to their chosen tertiary programme without taking IELTS.

UC International College (UCIC)

UC is the only University in New Zealand boasting a Navitas pathway college on campus. UCIC provides an alternative entry point for international students who favour or require extra support during their first year of study, offering a range of programmes from foundation studies, to the unique University Transfer Programmes (UTPs).

The University of Canterbury

UC offers a full suite of academic programmes. Students with undergraduate entry qualifications can often come straight into a bachelor's degree. Those with completed undergraduate degrees meeting our entry level requirements may apply for graduate and postgraduate diplomas, taught masters, course work and research masters, and PhD study.



CCEL COLLEGE OF ENGLISH
CHRISTCHURCH, NEW ZEALAND
IN PARTNERSHIP WITH THE UNIVERSITY OF CANTERBURY

ucic

UC UNIVERSITY OF CANTERBURY

* Mix English Academic Programme (MEAP) consists of English and academic studies and can be completed in three or four academic semesters (12-15 months).

† UTP is equivalent to Year 1 of the relevant degree from UC. Successful students then pathway to Year 2.

‡ Foundation Studies Certificate pathways to Year 1 of degree at UC or to UTP.

Most UC qualifications start in February of each year, while many also have a July intake.

For more information on courses, visit www.canterbury.ac.nz/courses

Support for International Students

UC is a uniquely supportive choice, with a wide range of resources available to help you adjust to life in a new country and succeed in your studies.

- International student orientation and enrolment events
- Student Support Advisors
- UC Student Mentoring programme
- UC Career Hub to help you find employment



How to apply

With one simple application, you are on your way to becoming a UC student. Simply supply four key documents (must be certified copies of the originals):

1. Application form – completed either online or in paper format.
2. Proof of identity – birth certificate or passport.
3. Evidence of English language proficiency.
4. Academic Transcript – required for UCIC or UC.

UC will share information between CCEL and/or UCIC to offer you the best pathway. For details of entry requirements, visit www.canterbury.ac.nz/international.



UC International

T: +64 3 364 2555

E: partnerships@canterbury.ac.nz

University of Canterbury

Te Whare Wānanga o Waitaha

Private Bag 4800

Christchurch 8140

New Zealand

www.canterbury.ac.nz

CCEL | COLLEGE OF
CHRISTCHURCH & AUCKLAND ENGLISH
IN PARTNERSHIP WITH THE UNIVERSITY OF CANTERBURY

ucic 



UC 
**UNIVERSITY OF
CANTERBURY**
Te Whare Wānanga o Waitaha
CHRISTCHURCH NEW ZEALAND